

## About The Speakers/Facilitator

### Speaker

Li Wei

She is an Advanced Practice Nurse and specialized in Parkinson disease and movement disorder. She walks with Parkinson patients on the journey of Deep Brain Stimulation (DBS) from assessment to surgery and post-operative care.

### Facilitator

Ms Li Wei is an Advanced Practice Nurse with National Neuroscience Institute at Tan Tock Seng campus. She graduated from National University of Singapore with a master degree in Adult Care Nursing.

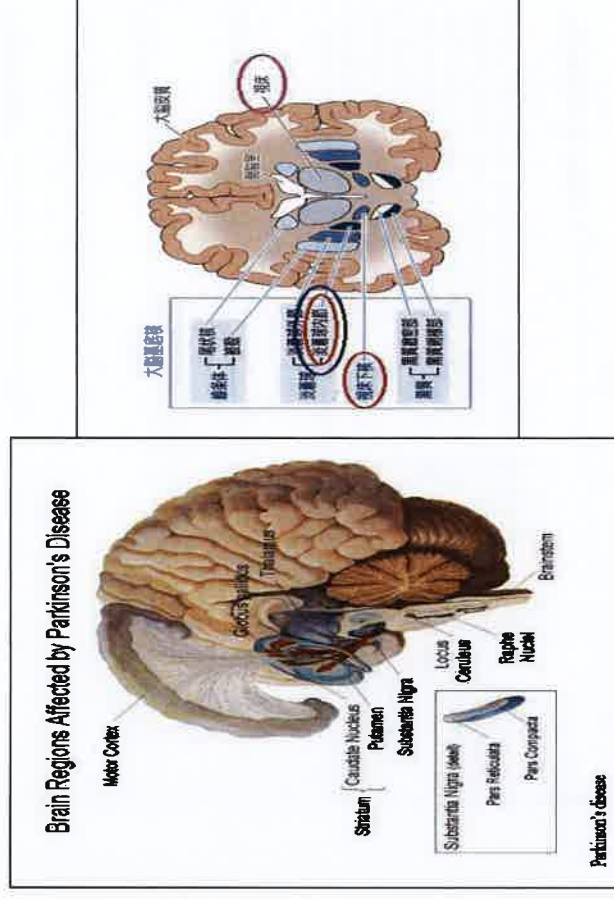
She sub-specialises in Parkinson disease and movement disorder and has many years of experience in managing patients with Parkinson disease including deep brain stimulation. She is also a qualified advanced care planning facilitator.

# Caregivers Workshop

## Care for Parkinson Patients who underwent Deep Brain Stimulation

### 照顾接受深部脑刺激的帕金森病患者

A 3 hour programme brought to you by Parkinson Society Singapore



Parkinson Society Singapore

Block 191, Bishan Street 13, #01-415, Singapore 570191 ☎: 6353 5338, 📠: 6353 3085  
🌐 [www.parkinson.org.sg](http://www.parkinson.org.sg) ✉ [info@parkinson.org.sg](mailto:info@parkinson.org.sg)



Parkinson Society Singapore

Block 191, Bishan Street 13, #01-415, Singapore 570191 ☎: 6353 5338, 📠: 6353 3085  
🌐 [www.parkinson.org.sg](http://www.parkinson.org.sg) ✉ [info@parkinson.org.sg](mailto:info@parkinson.org.sg)

# Registration Form

## Date & Time 日期和时间

22 December 2018 (Saturday) 9.00am to 12 noon |  
十月二十二日 (星期六) 九点三十分至十二点

## Participant's Details 参加者各人资料

Caregiver's Name: \_\_\_\_\_  
\*(PSS Member / Non-member)

NRIC: \_\_\_\_\_ Gender: \*Female / Male Age: \_\_\_\_\_

Address: \_\_\_\_\_

Phone No.: \_\_\_\_\_ (H) \_\_\_\_\_ (M)

## Parkinson Patient's Details:

Name: \_\_\_\_\_  
\*(PSS Member / Non-member)

Relationship to Caregiver: \_\_\_\_\_

*I agree that at all times during the Caregiver Workshop, safety remains my sole responsibility. I hereby agree for myself, and all of my family, do hereby RELEASE PSS, its President and Committee Members, Organisers, Representatives, Members, Agents, Employees and Volunteers, from all liabilities, claims, demands or any causes of action, and NOT TO SUE OR OTHERWISE MAKE ANY CLAIMS against ALL or Any Such Persons, whatsoever which may arise during my participation in the talk and waive any claim for damage arising from any cause whatsoever. All fees made are non-refundable. I hereby give my consent for the photos taken during the classes to be used for publicity.*

Signature & Date: \_\_\_\_\_

PSS Receipt No.:

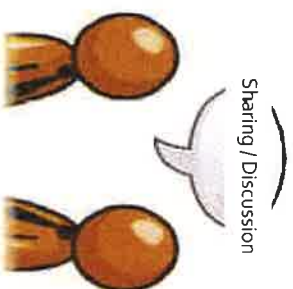
Please mail registration form together with your cheque in favour of **Parkinson Society Singapore** to the Parkinson Centre. You may also make payment at the Parkinson Centre via cash or credit card. For enquiries, please contact us at 6353 5338.

# Programme Highlights

## SESSION 1

This session is all you need to know about Deep Brain Stimulation (DBS) for people with Parkinson disease (PwP).

这个课程是您需要了解帕金森病患者深部脑刺激的全部内容。



## SESSION 2

### Caregiver experience sharing and discussion

This is the platform for caregivers to discuss the difficulties and problems they have encountered while caring for people with Parkinson disease (PwP). Caregivers can also share among themselves the useful and helpful tips for taking care of PwP.

这是护理人员讨论他们在照顾帕金森病患者时遇到的困难和问题的平台。看护人也可以互相分享有帮助的贴士。

## Date & Time | 日期和时间

22 December 2018 (Saturday) | 9.00am to 12 noon

## Venue | 地点

The Parkinson Centre  
Block 191, Bishan Street 13, #01-415, Singapore 570191

## Programme Fee | 节目收费

\$20 (PSS Member 会员 / \$30 (Non-PSS member) 非会员)

[Note: Only primary caregiver will be charged as PSS Member, additional caregiver (s) shall be charged as Non-PSS Member.]



Please mail registration form together with your cheque in favour of **Parkinson Society Singapore** to the Parkinson Centre. You may also make payment at the Parkinson Centre via cash or credit card. For enquiries, please contact us at 6353 5338.